

NAUKRI JOBSPEAK REPORT

Hiring Trends By City, Industry
& Experience



2023

August

TABLE OF CONTENTS

1
Overview

2
Industry Analysis

3
City Analysis

4
Work Experience Analysis

5
Methodology

6
Annexure

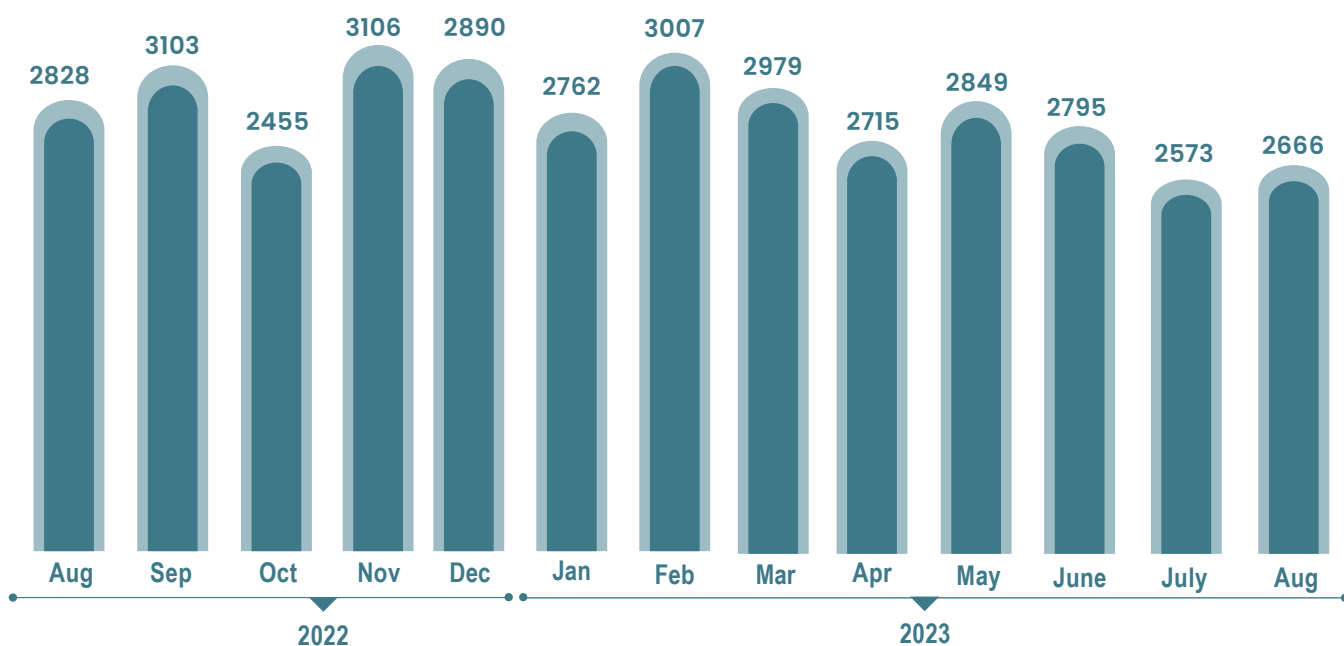




INDEX FOR AUGUST 2023

Hiring demand continues in AI, Oil & Gas, Hospitality and Pharma: Naukri Jobspeak

OVERALL HIRING TRENDS



- Naukri JobSpeak Index, stood at 2666 for August 2023, up 4% compared to July 2023, and down 6% from August last year.
- The highest growth in new jobs was witnessed in the Oil & Gas sector, Hospitality sector and Pharma sector.
- Hiring for AI related roles such as Full-Stack AI Scientists and ML Engineers increased by 24% and 37%, respectively.
- Overall hiring in the IT sector increased by 3% compared to July 2023.
- Mini Metros continue to emerge as Hiring Havens.
- Seasoned Stalwarts continued to be most sought after candidates.

Pawan Goyal,

Chief Business Officer,
Naukri.com



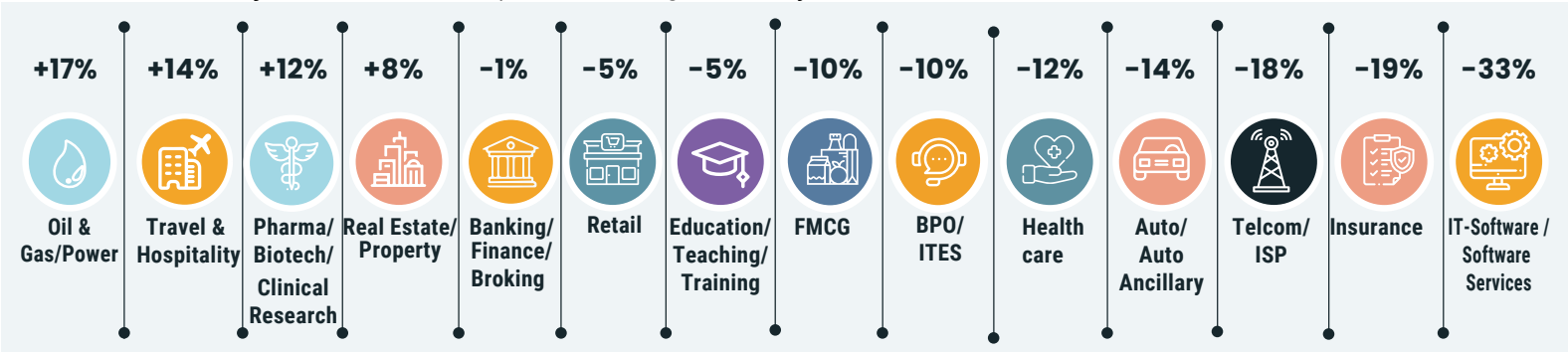
Jobspeak Index for August 2023 reveals optimistic hiring sentiments being driven by Non-IT sectors such as Oil&Gas, Hospitality, and Pharma. IT sector also showed positive signs; registering sequential hiring growth after declining since past few months. This is a healthy indication of normalcy trends returning to white-collar job market in India.





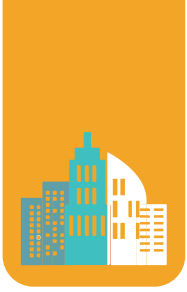
HIRING TRENDS ACROSS INDUSTRIES

- Oil & Gas sector continued its upward trend with 17% growth in hiring compared to August last year.
- The job growth for this sector is highest in the cities of Ahmedabad, Mumbai, Chennai, and Hyderabad.
- Hospitality sector continues to hire aggressively and witnessed 14% growth in new jobs created compared to August last year.
- Demand for roles such as Restaurant Managers, and Guest Services seeing a surge, predominantly across Mumbai and Chennai.
- Driven by a renewed focus on R&D, the Pharma sector witnessed a 12% growth in hiring compared to August last year.
- The roles in highest demand include Clinical Research Scientists, Product Managers - Pharma, and QC/Lab Chemists.
- The number of open job vacancies related to AI functions increased in August by 8% compared to July 2023.
- The new jobs created in the IT industry were 33% lower compared to the high base value in August last year.
- Besides IT, sectors such as Insurance and Auto showed a dip of 19% and 14% respectively, in new job creation compared to August last year.



Growth Trends: Aug'23 vs Aug'22

Industry	Aug-22	Sep-22	Oct-22	Nov-22	Dec-22	Jan-23	Feb-23	Mar-23	Apr-23	May-23	June-23	July-23	Aug-23	Y-O-Y Growth %
Oil and Gas/Power/Infrastructure/Energy	550	606	498	603	646	656	625	608	630	675	686	632	642	↑ 17%
Travel & Hospitality	1526	1665	1492	1765	1577	1547	1705	1816	1625	1739	1634	1519	1736	↑ 14%
Pharma/Biotech/Clinical Research	1871	2094	1736	2154	2128	2074	2206	2251	2182	2314	2176	2036	2094	↑ 12%
Real Estate/Property	3384	4507	3140	4105	3815	3685	4169	4163	4020	3891	3621	3427	3667	↑ 8%
Banking/Financial Services/Broking	3576	4496	3565	4335	4016	3919	4260	4555	3721	3768	3644	3261	3533	↓ -1%
Retail	1621	1849	1578	1811	1798	1611	1724	1726	1534	1621	1579	1438	1541	↓ -5%
Education/Teaching/Training	5040	5448	4761	5346	5208	5076	5221	5638	5005	5088	4993	4561	4773	↓ -5%
FMCG/Foods/Beverage	1971	2176	1746	2096	2126	1842	1949	2092	1914	1874	1800	1694	1769	↓ -10%
BPO/ITES/CRM/Transcription	2325	2619	2131	2511	2249	2303	2456	2415	2186	2256	2163	2036	2085	↓ -10%
Medical/Healthcare/Hospital	6546	6059	5339	6559	6674	5770	6328	6504	5948	6052	5696	5500	5758	↓ -12%
Auto/Auto Ancillary	1360	1201	1063	1240	1219	1193	1322	1287	1195	1271	1238	1193	1173	↓ -14%
Telcom/ISP	664	685	517	630	612	549	636	636	571	645	528	459	547	↓ -18%
Insurance	2200	2479	2382	2398	2544	2495	2324	3212	1761	1656	1644	1775	1779	↓ -19%
IT-Software/Software Services	4881	5283	3825	4674	4087	4010	4428	4147	3392	3618	3511	3187	3278	↓ -33%



HIRING TRENDS ACROSS CITIES

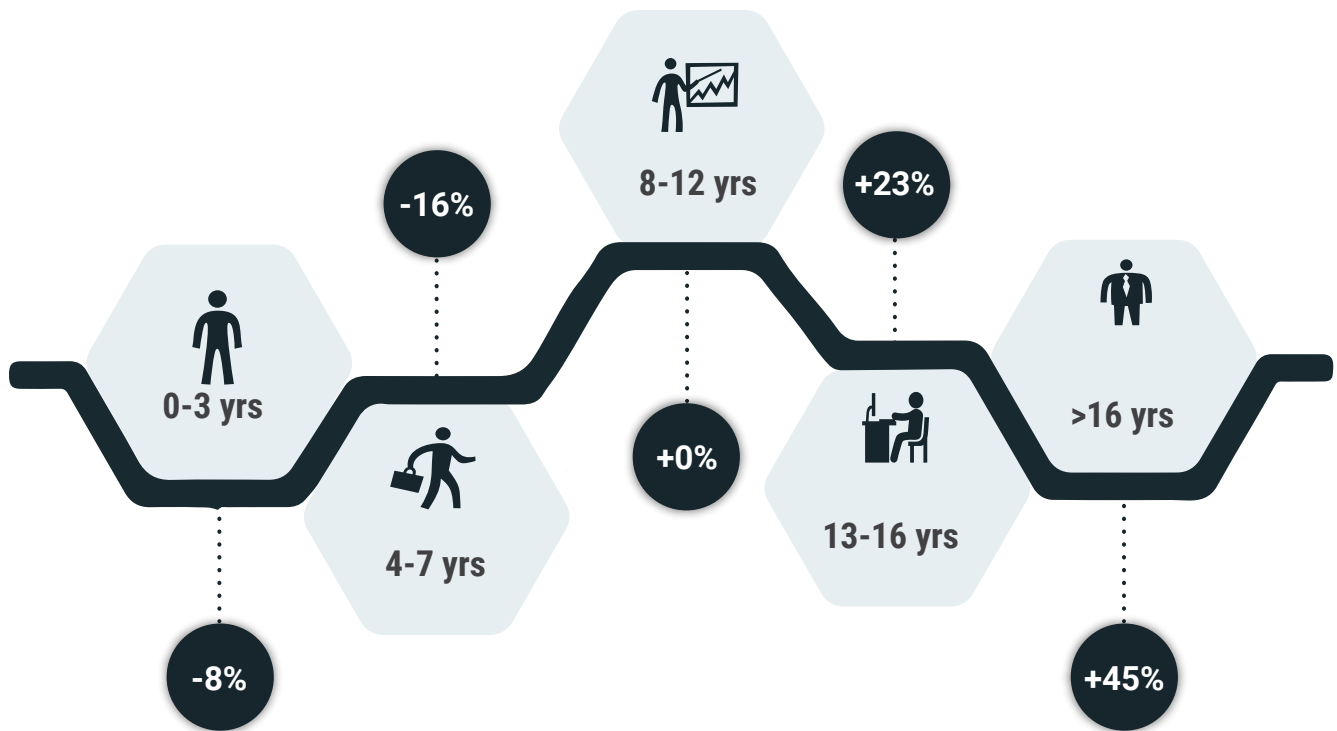
- Mini-metros are swiftly stepping into the limelight.
- Vadodara leading the brigade showcasing a 19% growth in new job creation.
- Closely followed by Ahmedabad and Jaipur, with 8% and 5% growth in new job creation in August 2023 compared to August last year.
- Oil & Gas and Pharma have been pivotal sectors in driving new job creation in these emerging cities.



Growth Trends: Aug'23 vs Aug'22

HIRING TRENDS ACROSS EXPERIENCE LEVELS

- Seasoned professionals with 16+ years of experience witnessed a 45% hiring surge in August 2023 as compared to August last year.
- This is a testament to industries valuing in-depth knowledge, wisdom, and experience.
- On the other side of the spectrum, hiring for entry-level professionals dipped by 8% as compared to August last year.



Growth Trends: Aug'23 vs Aug'22

Exp Bucket	Aug-22	Sep-22	Oct-22	Nov-22	Dec-22	Jan-23	Feb-23	Mar-23	Apr-23	May-23	Jun-23	Jul-23	Aug-23	Y-O-Y Growth %
0-3 yrs	2999	3265	2642	3253	3106	2926	3073	3144	2834	2945	2890	2672	2769	-8%
4-7 yrs	3053	3346	2632	3293	2998	2871	3104	3010	2725	2846	2770	2516	2567	-16%
8-12 yrs	2644	2914	2229	2864	2676	2568	2885	2859	2625	2774	2724	2507	2633	+0%
13-16 yrs	1928	2178	1771	2342	2231	2159	2362	2389	2217	2370	2379	2271	2372	+23%
16 + yrs	1693	1946	1613	2055	2184	2051	2273	2373	2230	2355	2370	2276	2457	+45%

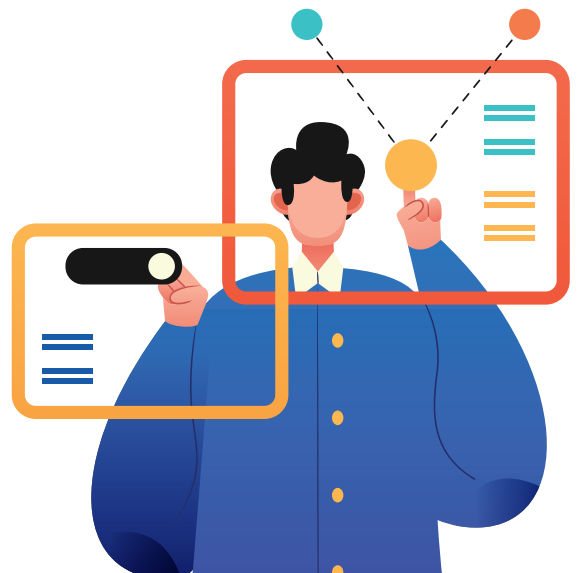
METHODOLOGY:

The Naukri JobSpeak is a monthly Index representing the state of the Indian job market & hiring activity based on new job listings and job-related searches* by recruiters on the resume database on Naukri.com. The JobSpeak Index captures hiring activity across multiple dimensions, including industries, cities, functional areas, and experience bands. July 2008 is taken as the base month with an index value of 1,000, and the subsequent monthly index values are compared with the data for July 2008. The index is a highly robust and reliable indicator of white-collar hiring in India. It is aggregated based on the hiring activity of over 100,000 clients with over 70 Lakh new job mandates yearly. The report does not cover gig employment, hyperlocal hiring, or campus placement. Over a long period of time, JobSpeak could be impacted by factors like internet penetration and Naukri's market share.

*Index now includes job-related searches on Naukri's resume database, which helps generate statistically significant data at a more granular level.














ABOUT NAUKRI.COM

Naukri.com, India's No. 1 job site and the flagship brand of Info Edge introduced the concept of e-recruitment in India. Since its inception in 1997, Naukri.com has continuously grown while outperforming its competitors in every sphere. Info Edge was the first internet company to be listed in India. As the market leader, the brand has enjoyed the highest awareness and market share amongst job seekers and recruiters for over two decades. It has become synonymous with the jobs category. The platform has over 1 Crore active app installs and receives over 3 Million job applications daily. It provides hiring-related services to corporates, recruiters, placement agencies, and job seekers in India & overseas. It offers multiple products like Resume Database Access, listings, Branding, and response management tools. With more than 70 lakh new job mandates every year and over 9 Crore jobseekers, the brand serves over 100,000 unique clients through its 63 offices in 56 cities in India.



ANNEXURE INDUSTRY DATA														
Industry	Global Market Performance (USD Billion)													Growth
	Aug-22	Sep-22	Oct-22	Nov-22	Dec-22	Jan-23	Feb-23	Mar-23	Apr-23	May-23	Jun-23	Jul-23	Aug-23	Y-o-Y Growth %
Office Equipment/Automation	2177	2567	2464	3271	3229	4049	4148	3361	3596	3902	3786	3778	3905	📈 79%
Defence/Government	5200	6087	5270	7829	7254	7391	7662	7684	6373	8906	9560	6796	7529	📈 45%
Construction/Engineering/Cement/Metals	793	907	791	1025	1050	1004	1061	1045	1031	1083	1089	1013	1066	📈 34%
Semiconductors/Electronics	4255	4832	4169	5111	5185	4727	5199	5208	5004	5095	5371	5067	5096	📈 20%
Oil and Gas/Power/Infrastructure/Energy	550	606	498	603	646	656	625	608	630	675	686	632	642	📈 17%
Travel & Hospitality	1526	1665	1492	1765	1577	1547	1705	1816	1625	1739	1634	1519	1736	📈 14%
Gems & Jewellery	5500	5789	4533	5713	5705	5638	5742	6816	5477	6250	5816	5956	6176	📈 12%
Chemicals/PetroChemical/Plastic/Rubber	1383	1504	1240	1621	1589	1699	1667	1709	1482	1689	1612	1499	1549	📈 12%
Pharma/Biotech/Clinical Research	1871	2094	1736	2154	2128	2074	2206	2251	2182	2314	2176	2036	2094	📈 12%
Architecture/Interior Designing	2324	2258	2028	2618	2434	2605	2675	2728	2589	2811	2610	2612	2596	📈 12%
Courier/Transportation/Freight	2654	2877	2729	3195	3048	2788	2931	3020	2908	3030	2975	2777	2961	📈 12%
Media/Dotcom/Entertainment	358	427	364	455	364	450	402	458	455	480	434	426	397	📈 11%
Industrial Products/Heavy Machinery	1326	1575	1284	1619	1602	1286	1483	1612	1560	1489	1484	1377	1466	📈 11%
Export/Import	1177	1406	1063	1332	1429	1319	1451	1240	1239	1405	1181	1224	1300	📈 10%
Real Estate/Property	3385	4508	3140	4105	3815	3685	4169	4163	4020	3891	3621	3427	3667	📈 8%
Fertilizers/Pesticides	4704	5817	4259	5676	5550	5060	5385	5223	5246	6375	5720	5373	5057	📈 8%
Advertising/PR/MR/Events	4290	5112	4086	5213	5498	4736	5559	5403	4607	4556	4497	4014	4458	📈 4%
Printing/Packaging	1220	1277	899	1102	1151	1149	1189	1183	1198	1157	1207	1260	1250	📈 2%
Shipping/Marine	946	1198	879	1109	1029	992	1064	1044	958	985	914	895	949	📈 0%
NGO/Social Services	3535	3684	2860	3706	3855	3378	3395	3306	3242	3724	3256	3104	3541	📈 0%
Textiles/Garments/Accessories	2012	2120	1524	2176	1971	1842	2126	2102	2095	2060	2067	1837	1997	📉 -1%
Banking/Financial Services/Broking	3576	4496	3565	4335	4016	3919	4260	4555	3721	3768	3644	3261	3533	📉 -1%
Retail	1621	1849	1578	1811	1798	1611	1724	1726	1534	1621	1579	1438	1541	📉 -5%
Education/Teaching/Training	5040	5448	4761	5346	5208	5076	5221	5638	5005	5058	4993	4561	4773	📉 -5%
Consumer Durables	805	820	656	921	842	788	831	797	750	886	825	772	754	📉 -6%
Legal	5788	6945	5283	6655	5724	5540	6272	6599	5413	5851	5637	5071	5263	📉 -9%
Accounting/Taxation/Finance	4053	4665	4555	5307	4740	4506	4787	4212	4000	3879	3554	3303	3638	📉 -10%
FMCG/Foods/Beverage	1971	2176	1746	2096	2126	1842	1949	2092	1914	1874	1800	1694	1769	📉 -10%
BPO/ITES/CRM/Transcription	2325	2619	2131	2511	2249	2303	2456	2415	2186	2256	2163	2036	2085	📉 -10%
Medical/Healthcare/Hospital	6546	6059	5339	6559	6674	5770	6328	6504	5948	6052	5696	5500	5758	📉 -12%
Auto/Auto Ancillary	1360	1201	1063	1240	1219	1193	1322	1287	1195	1271	1238	1193	1173	📉 -14%
Agriculture/Dairy	1521	1590	1413	1813	1641	1544	1657	1916	1463	1390	1308	1260	1260	📉 -17%
Telecom/ISP	664	685	517	630	612	549	636	636	571	645	528	459	547	📉 -18%
Insurance	2200	2479	2382	2398	2544	2495	2324	3212	1761	1656	1644	1775	1779	📉 -19%
IT-Hardware & Networking	856	916	672	828	758	745	816	863	749	733	680	581	636	📉 -26%
IT-Software/Software Services	4881	5283	3825	4674	4087	4010	4428	4147	3392	3618	3511	3187	3278	📉 -33%
Security/Law Enforcement	2358	2449	1252	1735	1778	2038	1891	1971	2027	1804	1862	1784	1563	📉 -34%
Recruitment/Employment Firm	3741	4410	3277	4154	3840	3764	3950	3803	2555	2411	2110	1744	1151	📉 -69%

ANNEXURE CITY DATA

City	Aug-22	Sep-22	Oct-22	Nov-22	Dec-22	Jan-23	Feb-23	Mar-23	Apr-23	May-23	Jun-23	Jul-23	Aug-23	Y-O-Y Growth %
Delhi / NCR	2604	2959	2436	3172	2933	2782	3014	2975	2759	2912	2650	2457	2613	 0%
Mumbai	2150	2373	1926	2468	2365	2264	2414	2369	2191	2299	2248	2039	2112	 -2%
Kolkata	3773	4176	3040	4026	3754	3413	3754	3522	3198	3544	3375	3132	3152	 -16%
Pune	4073	4453	3348	4221	3869	3682	4131	3932	3550	3669	3607	3272	3382	 -17%
Bengaluru / Bangalore	3420	3671	2843	3534	3150	3027	3389	3267	2947	3020	2945	2660	2730	 -20%
Chennai	2519	2726	2047	2625	2337	2207	2558	2478	2121	2192	2128	1927	1983	 -21%
Hyderabad / Secunderabad	3812	4246	3187	4026	3590	3431	3898	3663	3377	3446	3266	2945	3009	 -21%
Vadodara / Baroda	2512	2901	2504	3256	3416	3320	3517	3778	3177	3507	3074	2933	2992	 19%
Ahmedabad	5110	5814	4519	5766	6006	5601	5856	6041	5402	5614	5639	5335	5531	 8%
Jaipur	4632	4730	3895	4839	4857	4550	4768	4934	4823	4935	4274	4446	4844	 5%
Chandigarh	1962	2133	1652	2167	2182	1974	2232	2176	1958	2120	2052	1819	1946	 -1%
Coimbatore	3748	3581	2888	3604	3322	3150	3647	3547	2927	3037	3165	3083	3122	 -17%
Ernakulam / Kochi / Cochin	4748	4076	4214	4695	4360	4495	4630	4835	4225	4528	3975	3532	3431	 -28%